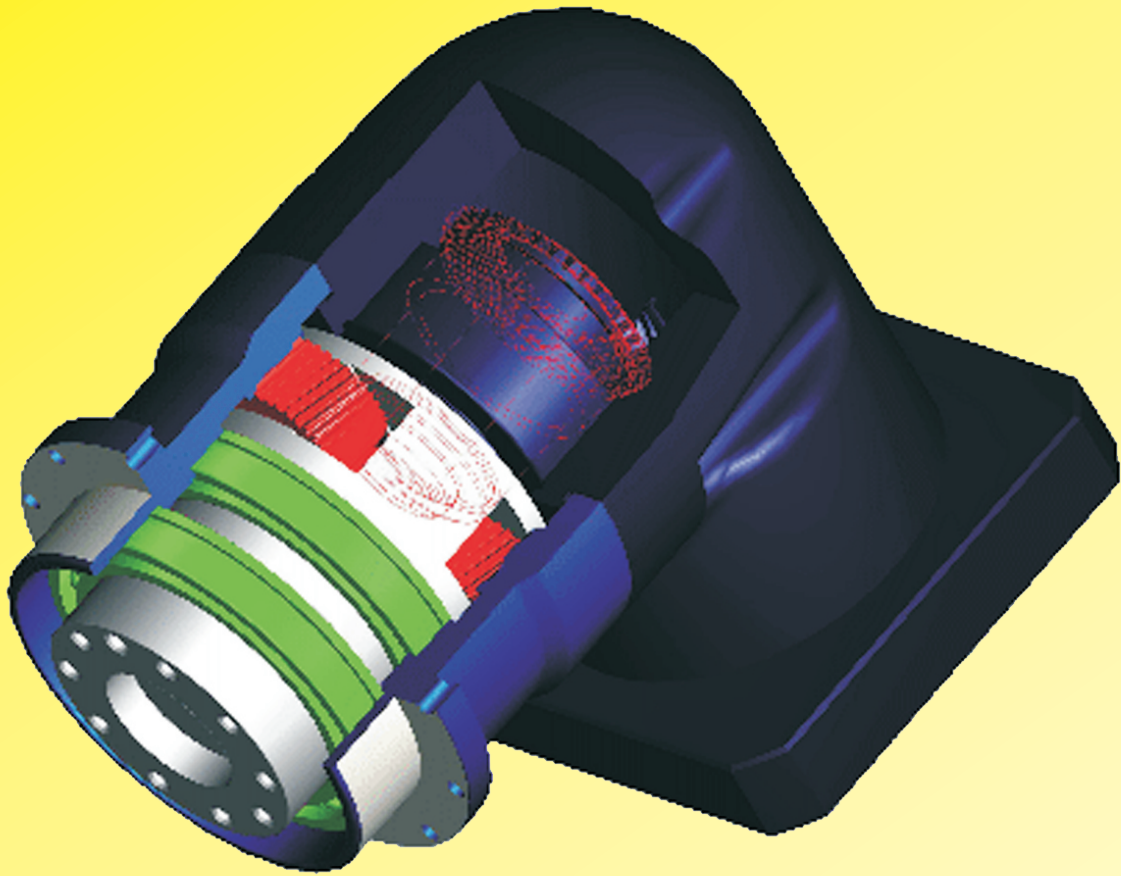


EVT系列行星减速机

EVT series planetary reducer

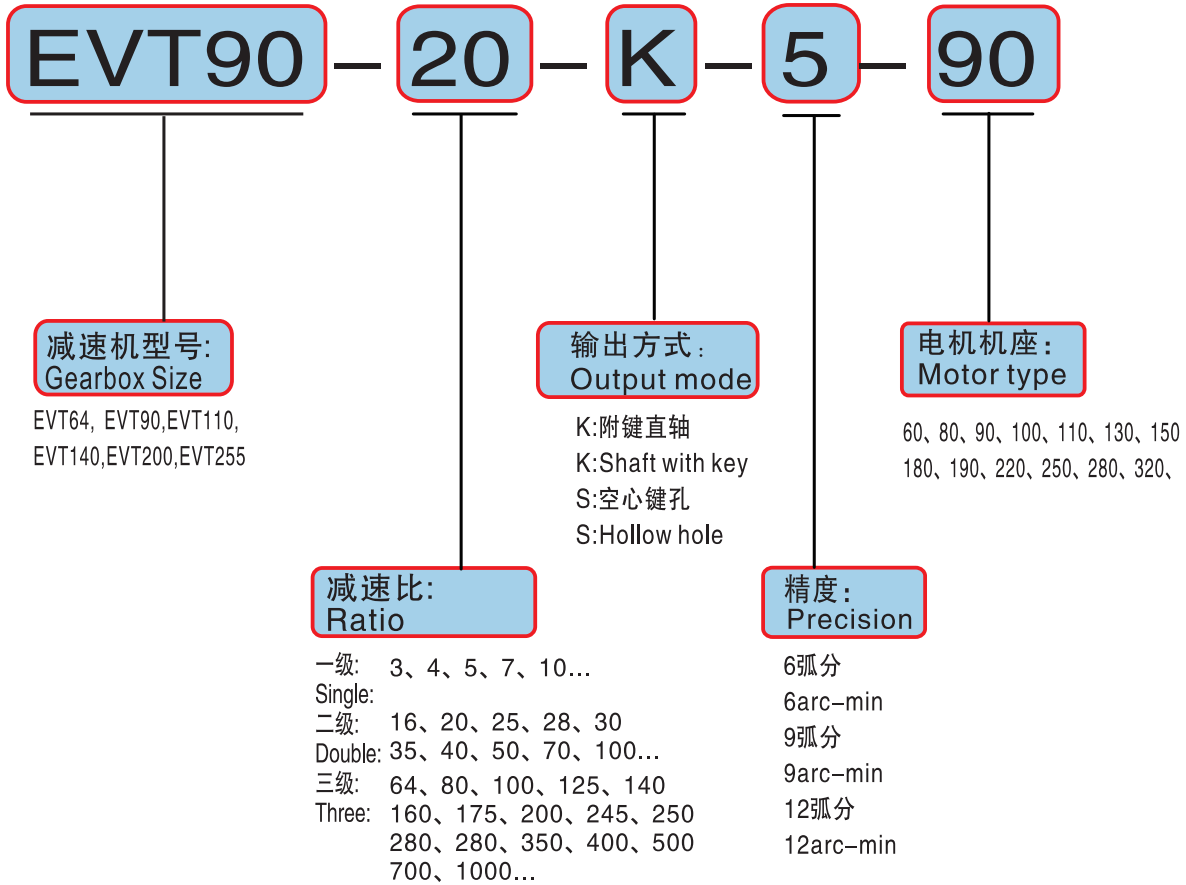


产品特点：高精度、承载力大、速比多、寿命长、噪音小、免维护。
Product features: High precision, high bearing capacity, high Speed ratio, Long life, low noise, maintenance free.

输入种类：交流伺服马达、直流伺服马达、步进马达。
Type: AC servo motor, DC servo motor, stepping motor.

应用领域：机床、军工、新能源设备、工业机器人、印刷设备、自动组装线、等高精度场合的应用。
Application fields: Machine tools, military industry, newenergy equipment, industrial robots, printing equipment, automatic Assembly line, and other high precision applications.

订货型号表示： Ordering representation



| 减速机工况应用选择表 Application selection of gear reducer | | | | | | |
|---|------------------------------------|---------------------------------|-------|--------|---------|---------|
| | | 使用系数(fs) Use coefficient(fs) | | | | |
| 负载类型 Load type | 每小时启动次数Z Start times per hour Z | 每日运行时间(h) Daily running time(h) | | | | |
| | | h≤4 | 4≤h≤8 | 8≤h≤12 | 12≤h≤16 | 16≤h≤24 |
| 平稳负载 Steady load | Z≤10 | 0.9 | 1.0 | 1.1 | 1.4 | 1.8 |
| | 10≤Z≤30 | 1.0 | 1.2 | 1.3 | 1.6 | 2.0 |
| | 30≤Z≤100 | 1.2 | 1.4 | 1.5 | 1.8 | 2.2 |
| 中等冲击负载 Medium impact load | Z≤10 | 1.2 | 1.4 | 1.5 | 1.8 | 2.2 |
| | 10≤Z≤30 | 1.4 | 1.6 | 1.65 | 2.0 | 2.5 |
| | 30≤Z≤100 | 1.6 | 1.8 | 2.0 | 2.2 | 2.8 |
| 冲击重载 Shock Overload | Z≤10 | 1.6 | 1.8 | 2.0 | 2.2 | 2.8 |
| | 10≤Z≤30 | 1.8 | 2.0 | 2.2 | 2.4 | 3.0 |
| | 30≤Z≤100 | 2.0 | 2.3 | 2.5 | 2.7 | 3.3 |

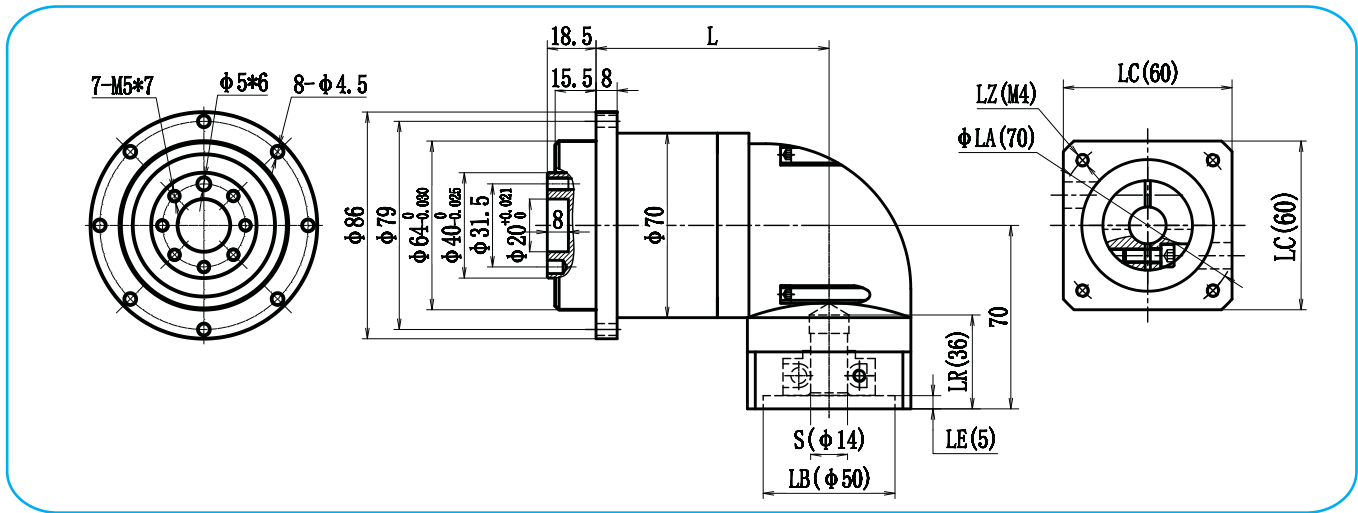
注：输出惯性大时,请加大一个型号选用；连续运转时工作寿命将降低一半。
Note: The output inertia is large, please increase the selection of a model;
Continuous operation working life will be reduced by half.

减速机性能参数 Gear performance parameters

| 规格 Specifications | 单位 Unit | 级数 Series | 速比 Ratio | EVT64 | EVT90 | EVT110 | EVT140 | EVT200 | EVT255 |
|-----------------------------------|------------|--------------|-------------|---|-------|--------|--------|--------|--------|
| 额定承受扭矩 T2N Rated torque | Nm | L1 | 4 | 52 | 165 | 320 | 650 | 1650 | 2650 |
| | | | 5 | 52 | 165 | 320 | 650 | 1650 | 2650 |
| | | | 7 | 36 | 120 | 210 | 500 | 1250 | 1850 |
| | | | 10 | 18 | 75 | 165 | 320 | 700 | 1150 |
| | | L2 | 16 | 52 | 165 | 320 | 650 | 1650 | 2650 |
| | | | 20 | 52 | 165 | 320 | 650 | 1650 | 2650 |
| | | | 25 | 52 | 165 | 320 | 650 | 1650 | 2650 |
| | | | 28 | 52 | 165 | 320 | 650 | 1650 | 2650 |
| | | | 35 | 52 | 165 | 320 | 650 | 1650 | 2650 |
| | | | 40 | 52 | 165 | 320 | 650 | 1650 | 2650 |
| | | | 50 | 52 | 165 | 320 | 650 | 1650 | 2650 |
| | | | 70 | 36 | 120 | 210 | 500 | 1250 | 1850 |
| | | | 100 | 18 | 75 | 165 | 320 | 700 | 1150 |
| | | | L3 | 64 | 52 | 165 | 320 | 650 | 1650 |
| | | 80 | | 52 | 165 | 320 | 650 | 1650 | 2650 |
| | | 100 | | 52 | 165 | 320 | 650 | 1650 | 2650 |
| | | 112 | | 52 | 165 | 320 | 650 | 1650 | 2650 |
| | | 125 | | 52 | 165 | 320 | 650 | 1650 | 2650 |
| | | 140 | | 52 | 165 | 320 | 650 | 1650 | 2650 |
| | | 150 | | 52 | 165 | 320 | 650 | 1650 | 2650 |
| | | 160 | | 52 | 165 | 320 | 650 | 1650 | 2650 |
| | | 175 | | 52 | 165 | 320 | 650 | 1650 | 2650 |
| | | 196 | | 52 | 165 | 320 | 650 | 1650 | 2650 |
| | | 200 | | 52 | 165 | 320 | 650 | 1650 | 2650 |
| | | 245 | | 52 | 165 | 320 | 650 | 1650 | 2650 |
| | | 250 | | 52 | 165 | 320 | 650 | 1650 | 2650 |
| | | 280 | | 52 | 165 | 320 | 650 | 1650 | 2650 |
| | | 343 | | 38 | 120 | 210 | 500 | 1250 | 1850 |
| | | 350 | | 52 | 165 | 320 | 650 | 1650 | 2650 |
| | | 400 | 52 | 165 | 320 | 650 | 1650 | 2650 | |
| | | 490 | 36 | 120 | 210 | 500 | 1250 | 1850 | |
| | | 500 | 52 | 165 | 320 | 650 | 1650 | 2650 | |
| | | 700 | 38 | 120 | 210 | 500 | 1250 | 1850 | |
| | | 1000 | 18 | 75 | 165 | 320 | 700 | 1150 | |
| 最大承受扭矩T2B Maximum torque T2B | Nm | L1 L2 L3 | 3-1000 | 2.0倍额定输出扭矩 2.0 times the rated output torque | | | | | |
| 额定输入转数n1N Rated speed n1N | R/min | L1 L2 L3 | 3-1000 | 3000 | 3000 | 3000 | 2000 | 2000 | 2000 |
| 背隙 Back clearance | arcmin | L1 | 3-10 | ≤6 | ≤6 | ≤6 | ≤6 | ≤6 | ≤6 |
| | | L2 | 12-100 | ≤9 | ≤9 | ≤9 | ≤9 | ≤9 | ≤9 |
| | | L3 | 64-1000 | ≤12 | ≤12 | ≤12 | ≤12 | ≤12 | ≤12 |
| 容许径向力F1 Allowable radial force | N | L1 L2 L3 | 3-1000 | 600 | 800 | 1500 | 3000 | 10000 | 20000 |
| 容许轴向力F2 Allowable axial force | N | L1 L2 L3 | 3-1000 | 500 | 600 | 1200 | 2400 | 9000 | 25000 |
| 效率 η Efficiency | % | L1 | 3-10 | 93% | 93% | 93% | 93% | 93% | 93% |
| | | L2 | 9-100 | 90% | 90% | 90% | 90% | 90% | 90% |
| | | L3 | 64-1000 | 87% | 87% | 87% | 87% | 87% | 87% |
| 重量 Weight | kg | L1 | 3-10 | 2.6 | 5.8 | 13.5 | 29.0 | 58.0 | 78.0 |
| | | L2 | 9-100 | 3.4 | 6.8 | 16.5 | 35.0 | 64.0 | 90.0 |
| | | L3 | 64-1000 | 4.0 | 7.8 | 19.5 | 40.0 | 70.0 | 100.0 |
| 噪音 Noise | DB | L1 L2 L3 | 3-1000 | ≤58 | ≤60 | ≤65 | ≤70 | ≤70 | ≤75 |

EVT64外形图

EVT64 Appearance Figure

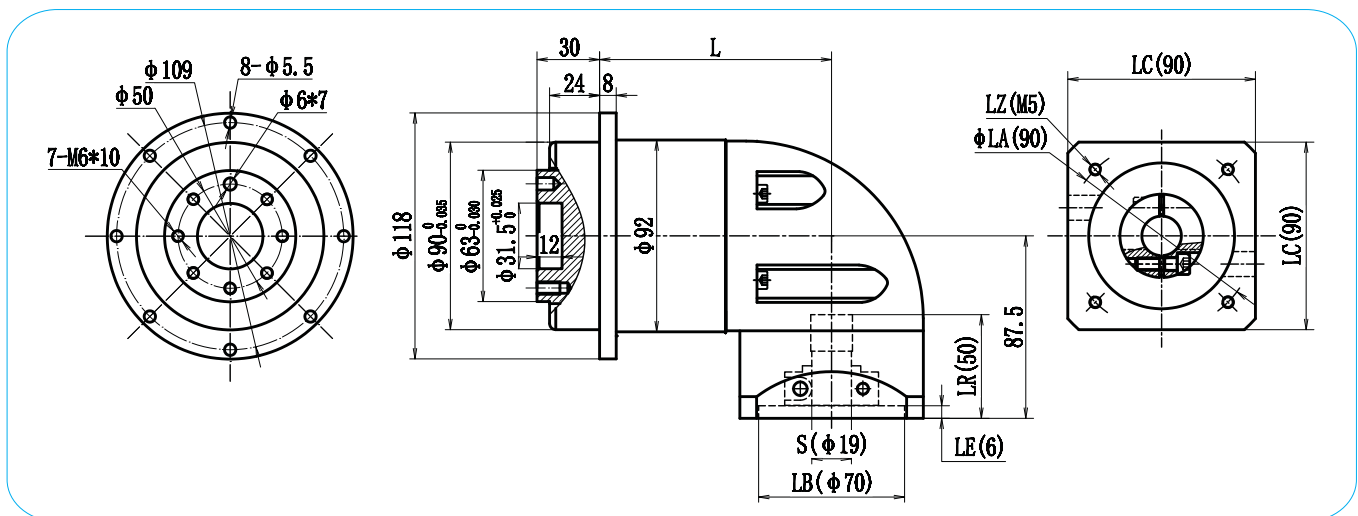


| 电机机座 Motor frame | LA | LZ | S | LB | LR | LE | LC | 级数 Series | | |
|---------------------|----|------|-------|----|----|----|----|-----------|------|-----|
| | | | | | | | | L1 | L2 | L3 |
| 40 | 45 | 4-M3 | 8 | 30 | 25 | 5 | 40 | 65 | 88.5 | 110 |
| 60 | 70 | 4-M4 | 11/14 | 50 | 30 | 5 | 60 | 65 | 88.5 | 110 |



EVT90外形图

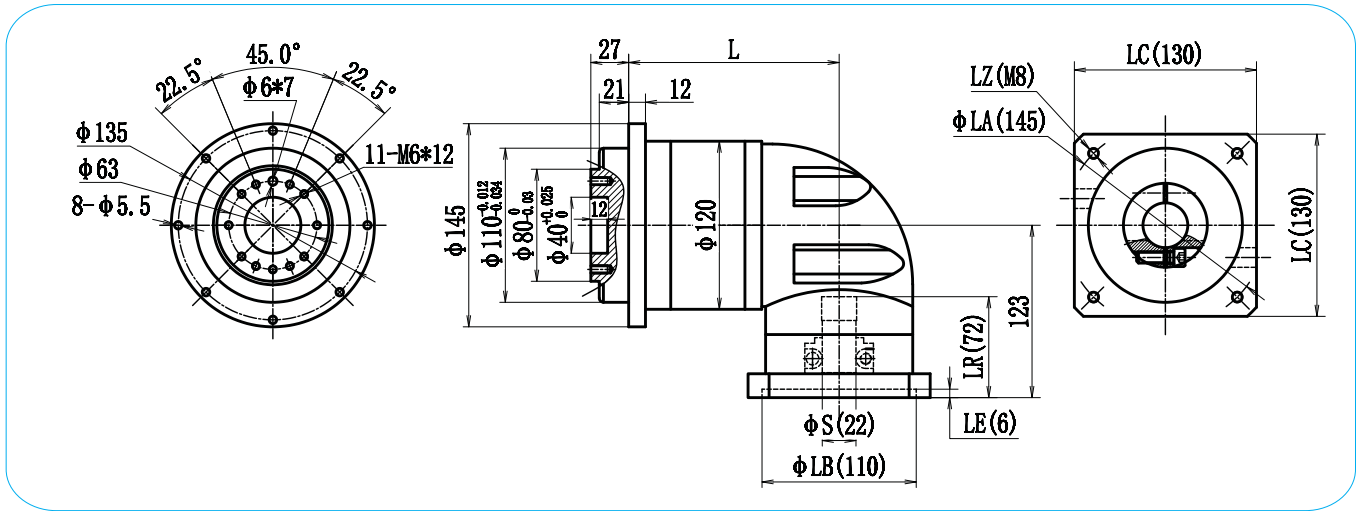
EVT90 Appearance Figure



| 电机机座 Motor frame | LA | LZ | S | LB | LR | LE | LC | 级数 Series | | |
|---------------------|-----|------|-------|----|----|----|----|-----------|-----|-----|
| | | | | | | | | L1 | L2 | L3 |
| 60 | 70 | 4-M4 | 11/14 | 50 | 30 | 5 | 60 | 80 | 113 | 143 |
| 80 | 90 | 4-M5 | 19 | 70 | 35 | 5 | 80 | 80 | 113 | 143 |
| 90 | 100 | 4-M6 | 16/19 | 80 | 35 | 5 | 90 | 80 | 113 | 143 |

EVT110外形图

EVT110 Appearance Figure

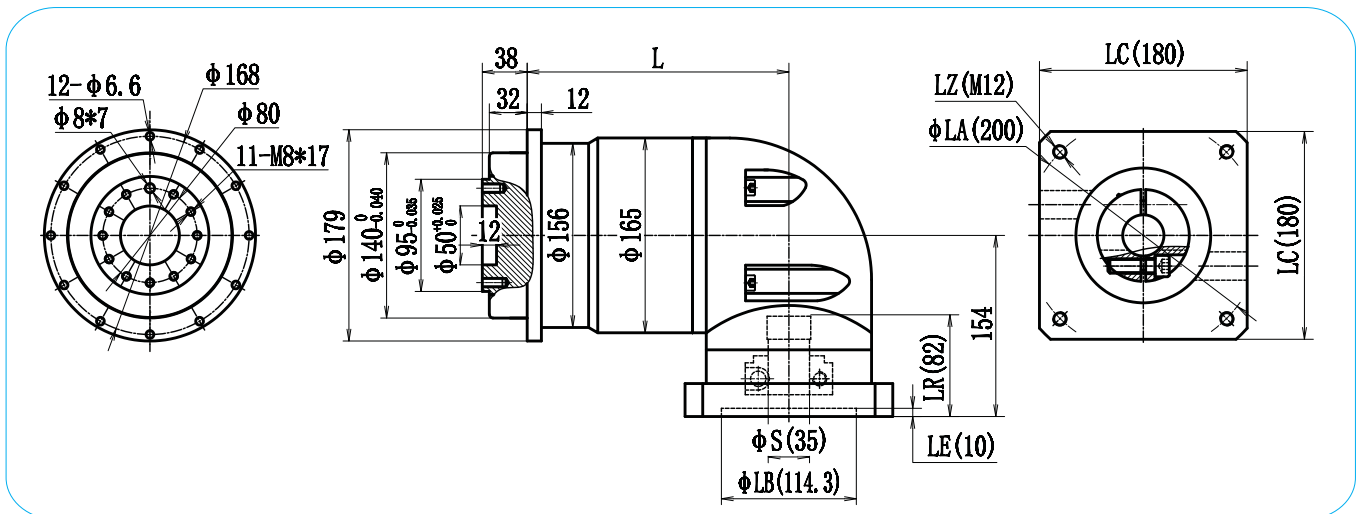


| 电机机座 Motor frame | LA | LZ | S | LB | LR | LE | LC | 级数 Series | | |
|---------------------|-----|------|-------|-----|----|----|-----|-----------|-----|-----|
| | | | | | | | | L1 | L2 | L3 |
| 100 | 115 | 4-M8 | 19/22 | 95 | 55 | 8 | 100 | 110 | 146 | 184 |
| 110 | 130 | 4-M8 | 22 | 110 | 55 | 8 | 110 | 110 | 146 | 184 |
| 130 | 145 | 4-M8 | 22/24 | 110 | 65 | 10 | 130 | 110 | 146 | 184 |



EVT140外形图

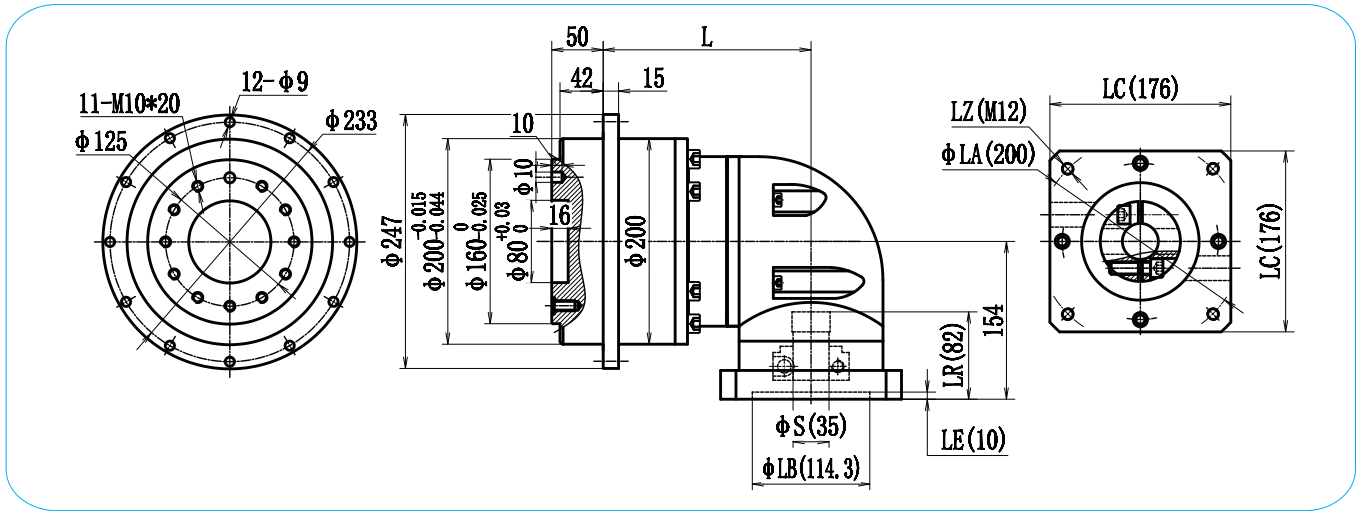
EVT140 Appearance Figure



| 电机机座 Motor frame | LA | LZ | S | LB | LR | LE | LC | 级数 Series | | |
|---------------------|-----|-------|-------|-------|----|----|-----|-----------|-----|-----|
| | | | | | | | | L1 | L2 | L3 |
| 130 | 145 | 4-M8 | 22/24 | 110 | 65 | 10 | 130 | 174 | 221 | 269 |
| 150 | 165 | 4-M10 | 28/32 | 130 | 65 | 10 | 150 | 174 | 221 | 269 |
| 180 | 200 | 4-M12 | 35 | 114.3 | 80 | 10 | 180 | 174 | 221 | 269 |

EVT200外形图

EVT200 Appearance Figure

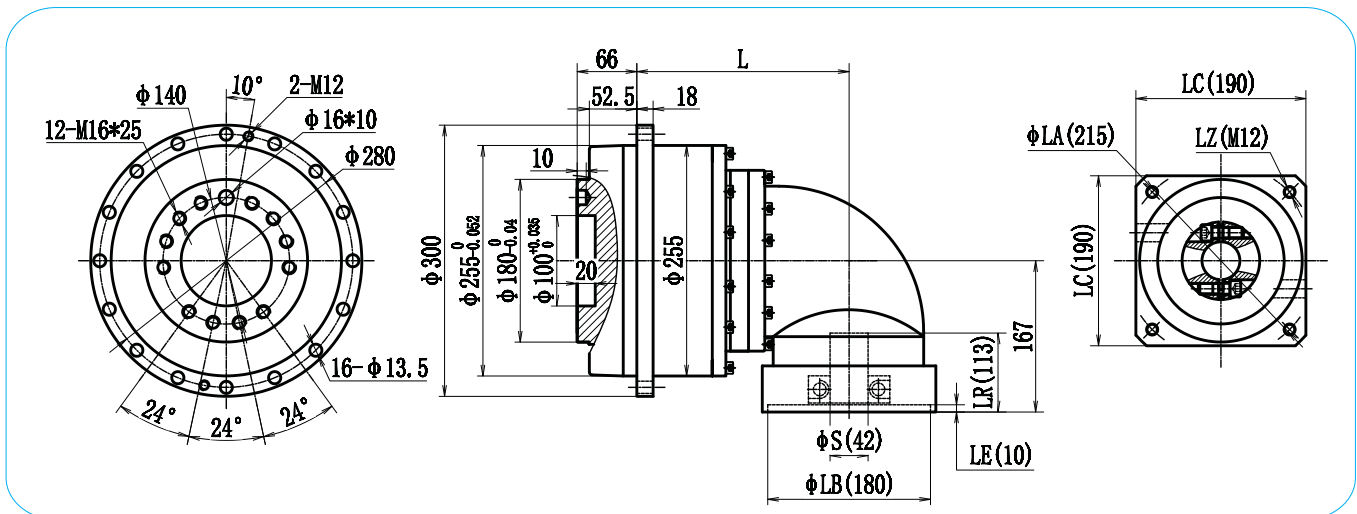


| 电机机座 Motor frame | LA | LZ | S | LB | LR | LE | LC | 级数 Series | | |
|---------------------|-----|-------|-------|-------|--------|----|-----|-----------|-----|-----|
| | | | | | | | | L1 | L2 | L3 |
| 150 | 165 | 4-M10 | 28/32 | 130 | 65 | 10 | 150 | 176 | 196 | 244 |
| 180 | 200 | 4-M12 | 35/42 | 114.3 | 80/114 | 10 | 180 | 176 | 196 | 244 |
| 190 | 215 | 4-M12 | 42/38 | 180 | 80 | 10 | 190 | 176 | 196 | 244 |



EVT255外形图

EVT255 Appearance Figure



| 电机机座 Motor frame | LA | LZ | S | LB | LR | LE | LC | 级数 Series | | |
|---------------------|-----|-------|-------|-------|--------|----|-----|-----------|-----|-----|
| | | | | | | | | L1 | L2 | L3 |
| 180 | 200 | 4-M12 | 35/42 | 114.3 | 80/114 | 10 | 180 | 275 | 300 | 360 |
| 190 | 215 | 4-M12 | 42/38 | 180 | 80 | 10 | 190 | 275 | 300 | 360 |
| 220 | 235 | 4-M12 | 55 | 200 | 110 | 10 | 220 | 275 | 300 | 360 |