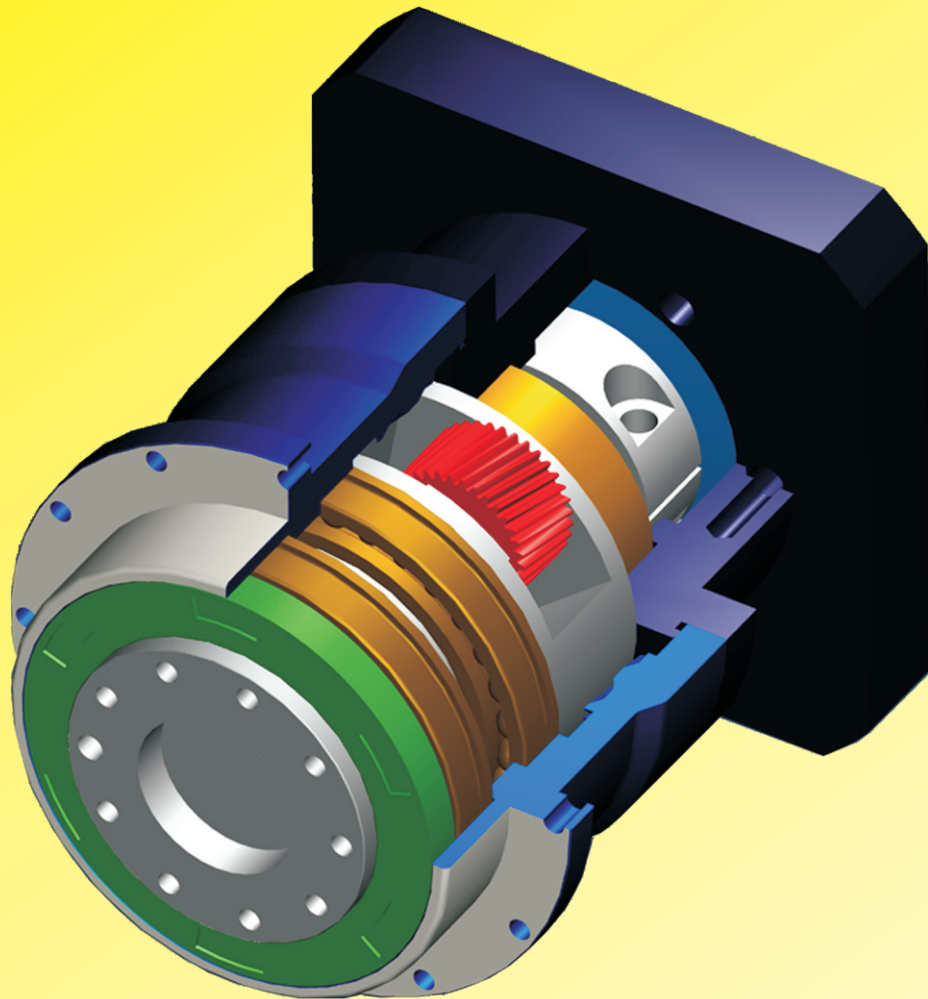


# VRT系列行星减速机

## VRT series planetary reducer



**产品特点：**高精度、承载力大、速比多、寿命长、噪音小、免维护。

**Product features:** High precision, high bearing capacity, high speed ratio, Long life, low noise, maintenance free.

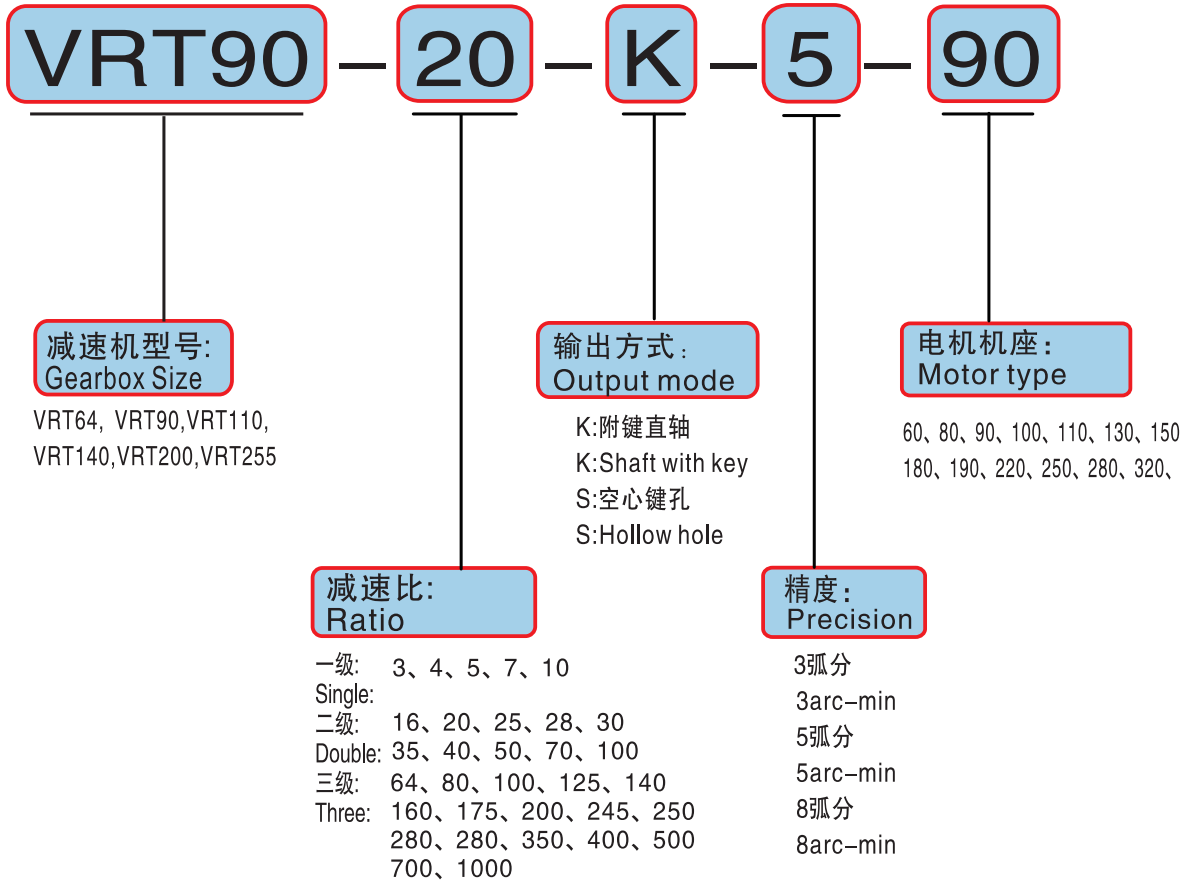
**输入种类：**交流伺服马达、直流伺服马达、步进马达。

**Type:** AC servo motor, DC servo motor, stepping motor.

**应用领域：**机床、军工、新能源设备、工业机器人、印刷设备、自动组  
装线、等高精度场合的应用。

**Application fields:** Machine tools, military industry, newenergy  
equipment, industrial robots, printing equipment, automatic  
assembly line, and other high precision applications.

## 订货型号表示： Ordering representation



减速机工况应用选择表 Application selection of gear reducer						
		使用系数(fs) Use coefficient(fs)				
负载类型 Load type	每小时启动次数Z Start times per hour Z	每日运行时间(h) Daily running time(h)				
		h≤4	4≤h≤8	8≤h≤12	12≤h≤16	16≤h≤24
平稳负载 Steady load	Z≤10	0.9	1.0	1.1	1.4	1.8
	10≤Z≤30	1.0	1.2	1.3	1.6	2.0
	30≤Z≤100	1.2	1.4	1.5	1.8	2.2
中等冲击负载 Medium impact load	Z≤10	1.2	1.4	1.5	1.8	2.2
	10≤Z≤30	1.4	1.6	1.65	2.0	2.5
	30≤Z≤100	1.6	1.8	2.0	2.2	2.8
冲击重载 Shock Overload	Z≤10	1.6	1.8	2.0	2.2	2.8
	10≤Z≤30	1.8	2.0	2.2	2.4	3.0
	30≤Z≤100	2.0	2.3	2.5	2.7	3.3

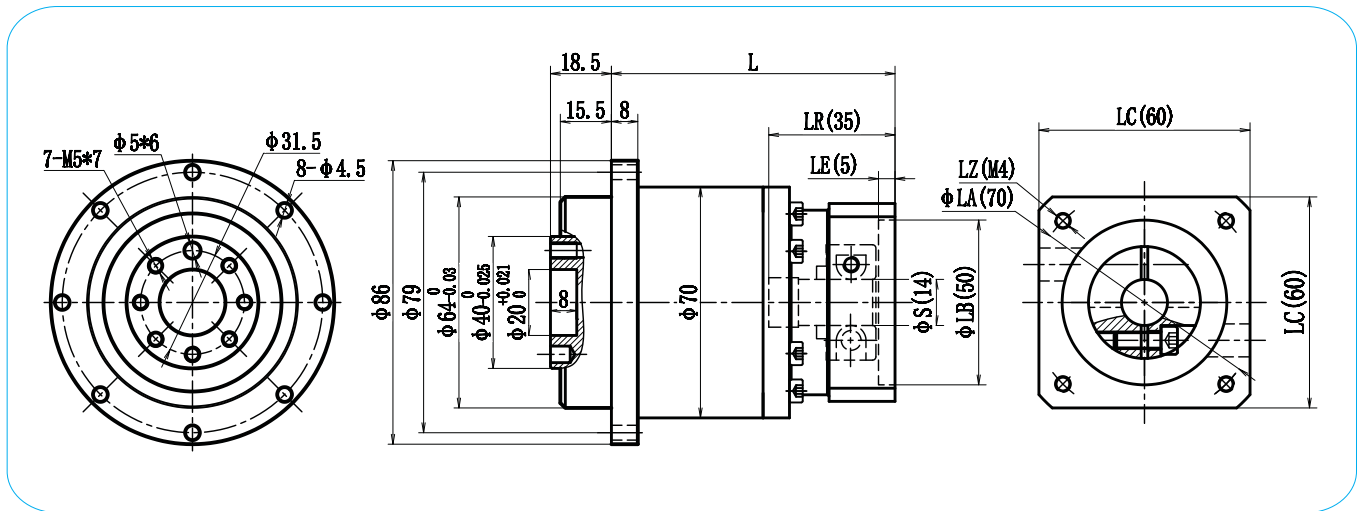
注：输出惯性大时,请加大一个型号选用；连续运转时工作寿命将降低一半。  
Note: The output inertia is large, please increase the selection of a model;  
Continuous operation working life will be reduced by half.

## 减速机性能参数 Gear performance parameters

规格 Specifications	单位 Unit	级数 Series	速比 Ratio	VRT64	VRT90	VRT110	VRT140	VRT200	VRT255		
额定承受扭矩 T2N Rated torque	Nm	L1	4	52	165	320	650	1650	2650		
			5	52	165	320	650	1650	2650		
			7	36	120	210	500	1250	1850		
			10	18	75	165	320	700	1150		
		L2	16	52	165	320	650	1650	2650		
			20	52	165	320	650	1650	2650		
			25	52	165	320	650	1650	2650		
			28	52	165	320	650	1650	2650		
			35	52	165	320	650	1650	2650		
			40	52	165	320	650	1650	2650		
			50	52	165	320	650	1650	2650		
			70	36	120	210	500	1250	1850		
			100	18	75	165	320	700	1150		
			L3	64	52	165	320	650	1650	2650	
		80		52	165	320	650	1650	2650		
		100		52	165	320	650	1650	2650		
		112		52	165	320	650	1650	2650		
		125		52	165	320	650	1650	2650		
		140		52	165	320	650	1650	2650		
		150		52	165	320	650	1650	2650		
		160		52	165	320	650	1650	2650		
		175		52	165	320	650	1650	2650		
		196		52	165	320	650	1650	2650		
		200		52	165	320	650	1650	2650		
		245		52	165	320	650	1650	2650		
		250		52	165	320	650	1650	2650		
		280		52	165	320	650	1650	2650		
		343		38	120	210	500	1250	1850		
		350		52	165	320	650	1650	2650		
		400		52	165	320	650	1650	2650		
		490		36	120	210	500	1250	1850		
		500	52	165	320	650	1650	2650			
		700	38	120	210	500	1250	1850			
		1000	18	75	165	320	700	1150			
		最大承受扭矩T2B Maximum torque T2B	Nm	L1 L2 L3	3-1000	2.0倍额定输出扭矩 2.0 times the rated output torque					
		额定输入转数n1N Rated speed n1N	R/min	L1 L2 L3	3-1000	3000	3000	3000	2000	2000	2000
背隙 Back clearance	arcmin	L1	3-10	≤3	≤3	≤3	≤3	≤3	≤3		
		L2	12-100	≤6	≤6	≤6	≤6	≤6	≤6		
		L3	64-1000	≤9	≤9	≤9	≤9	≤9	≤9		
容许径向力F1 Allowable radial force	N	L1 L2 L3	3-1000	600	800	1500	3000	10000	20000		
容许轴向力F2 Allowable axial force	N	L1 L2 L3	3-1000	500	600	1200	2400	9000	25000		
效率 η Efficiency	%	L1	3-10	97%	97%	97%	97%	97%	97%		
		L2	9-100	94%	94%	94%	94%	94%	94%		
		L3	64-1000	91%	91%	91%	91%	91%	91%		
重量 Weight	kg	L1	3-10	1.3	3.6	7.5	16.0	28.0	48.0		
		L2	9-100	1.5	4.2	9.5	20.0	32.0	60.0		
		L3	64-1000	1.8	4.8	11.5	24.0	36.0	72.0		
噪音 Noise	DB	L1 L2 L3	3-1000	≤55	≤55	≤60	≤65	≤70	≤70		

## VRT64外形图

## VRT64 Appearance Figure

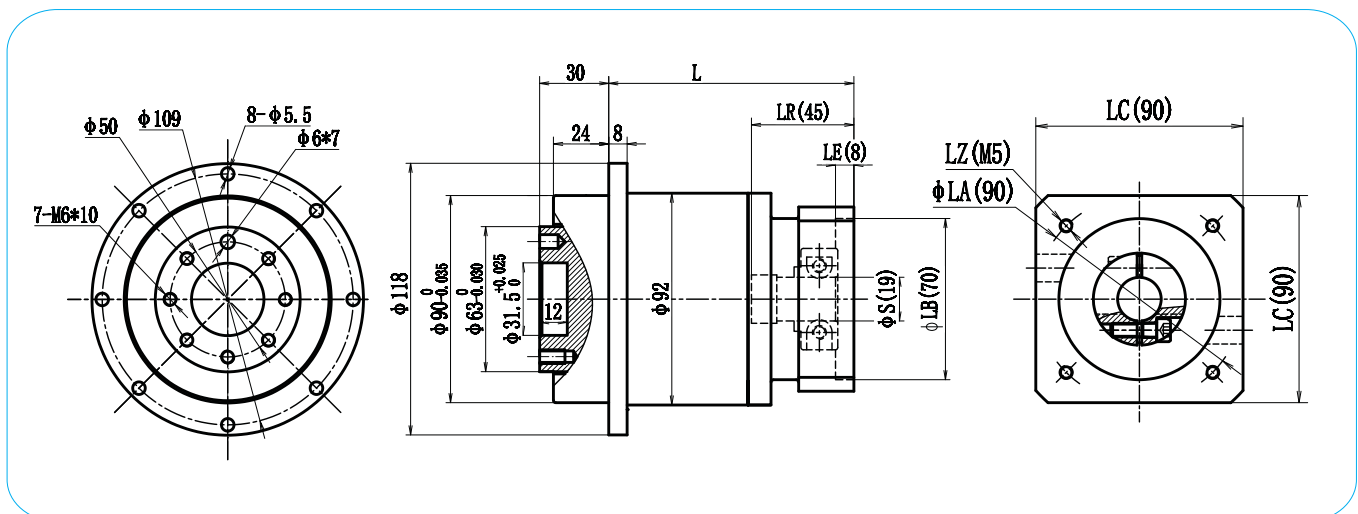


电机机座 Motor frame	LA	LZ	S	LB	LR	LE	LC	级数 Series		
								L1	L2	L3
40	45	4-M3	8	30	25	5	40	62.5	86	106
60	70	4-M4	11/14	50	30	5	60	62.5	86	106



## VRT90外形图

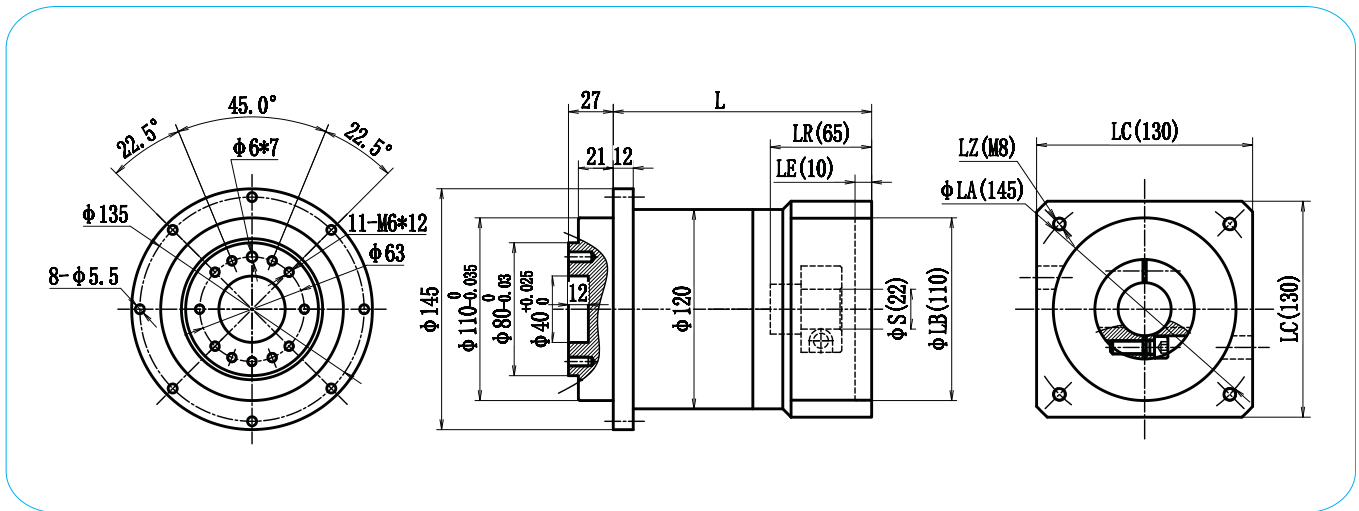
## VRT90 Appearance Figure



电机机座 Motor frame	LA	LZ	S	LB	LR	LE	LC	级数 Series		
								L1	L2	L3
60	70	4-M4	11/14	50	30	5	60	86.5	121	151
80	90	4-M5	19	70	35	5	80	86.5	121	151
90	100	4-M6	16/19	80	35	5	90	86.5	121	151

## VRT110外形图

## VRT110 Appearance Figure

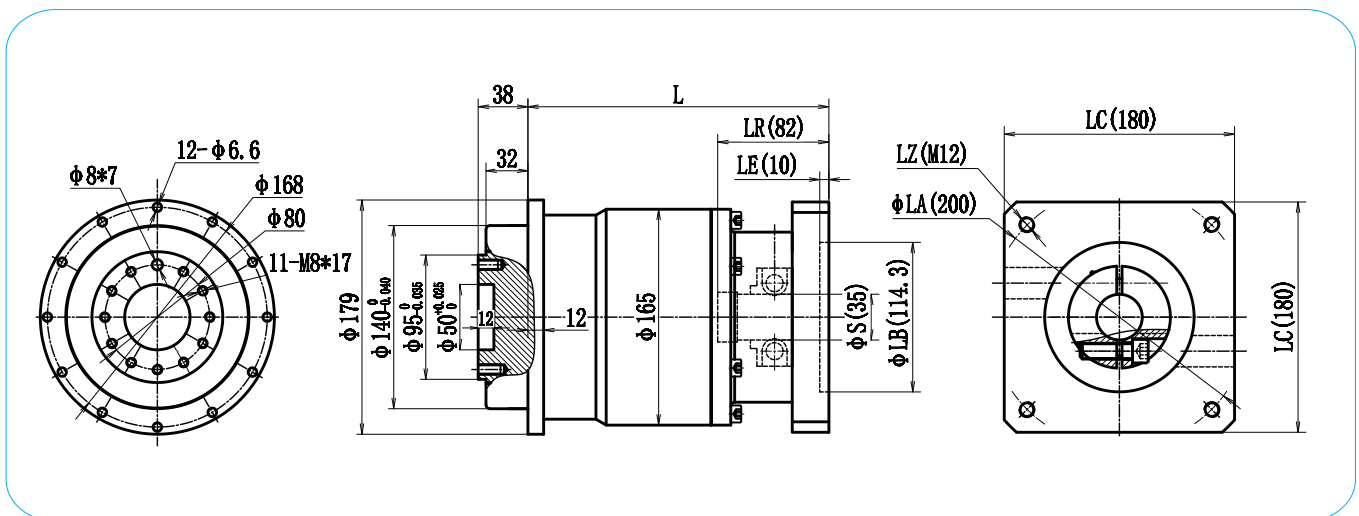


电机机座 Motor frame	LA	LZ	S	LB	LR	LE	LC	级数 Series		
								L1	L2	L3
100	115	4-M8	19/22	95	55	8	100	112	155	193
110	130	4-M8	22	110	55	8	110	112	155	193
130	145	4-M8	22/24	110	65	10	130	112	155	193



## VRT140外形图

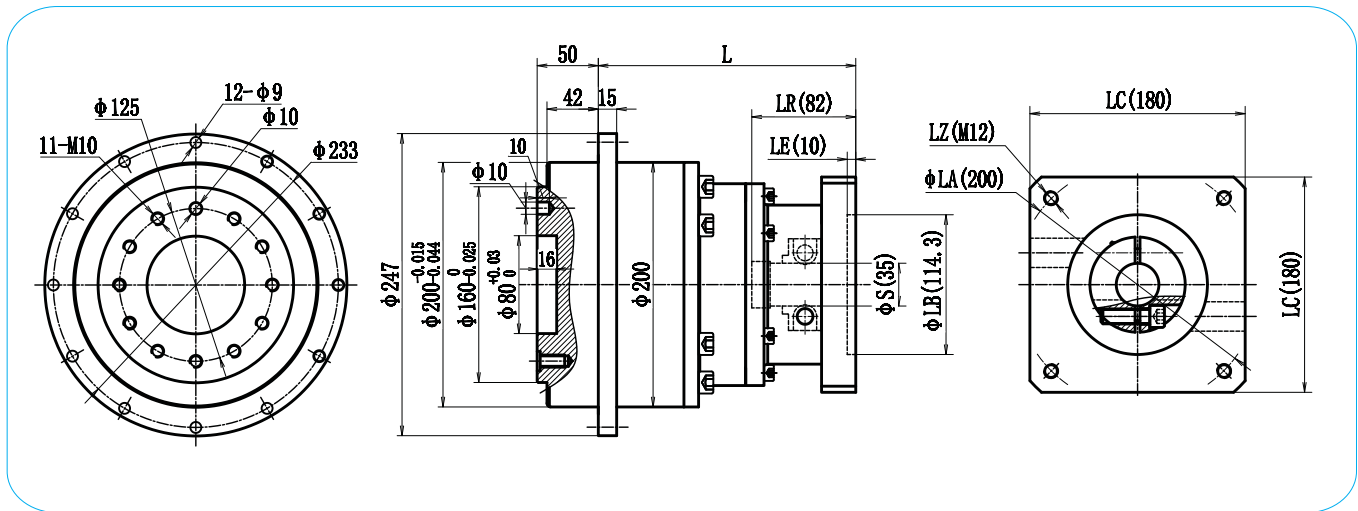
## VRT140 Appearance Figure



电机机座 Motor frame	LA	LZ	S	LB	LR	LE	LC	级数 Series		
								L1	L2	L3
130	145	4-M8	22/24	110	65	10	130	176	223	271
150	165	4-M10	28/32	130	65	10	150	176	223	271
180	200	4-M12	35	114.3	80	10	180	176	223	271

## VRT200外形图

## VRT200 Appearance Figure

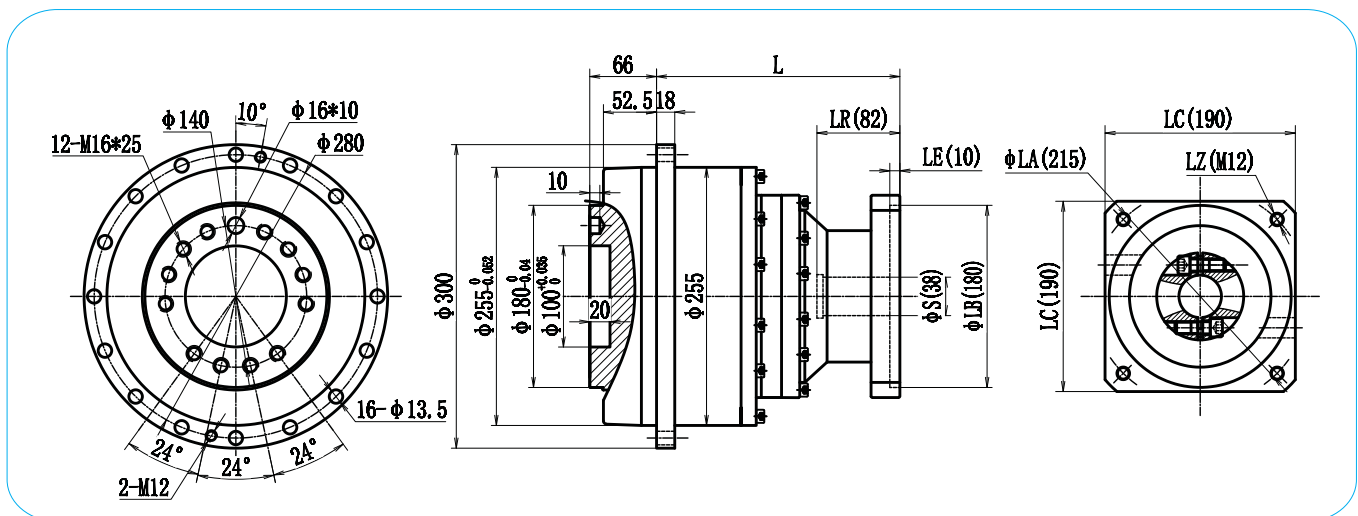


电机机座 Motor frame	LA	LZ	S	LB	LR	LE	LC	级数 Series		
								L1	L2	L3
150	165	4-M10	28/32	130	65	10	150	166	205	253
180	200	4-M12	35/42	114.3	80/114	10	180	166	205	253
190	215	4-M12	42/38	180	80	10	190	166	205	253



## VRT255外形图

## VRT255 Appearance Figure



电机机座 Motor frame	LA	LZ	S	LB	LR	LE	LC	级数 Series		
								L1	L2	L3
180	200	4-M12	35/42	114.3	80/114	10	180	188	232	258
190	215	4-M12	42/38	180	80	10	190	188	232	258
220	235	4-M12	55	200	110	10	220	188	232	---